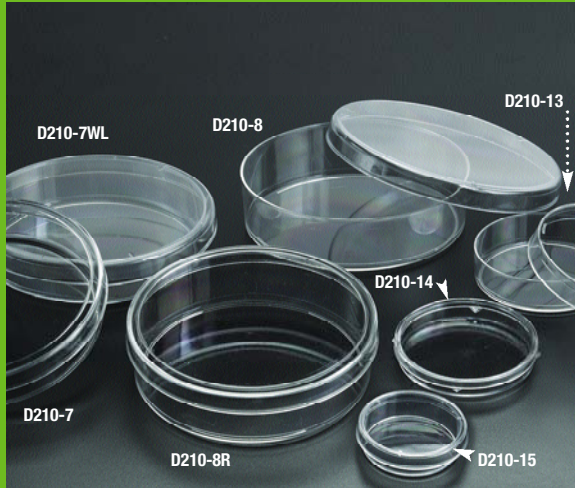


# PETRI DISHES



Cat. #	Size (mm)	Vol. (ml)	Qty/Sleeve	Qty/Cs
D210-7	100 x 20	100	20	500
D210-7WL	100 x 20	100	20	500
D210-8	100 x 25	125	20	500
D210-8R	100 x 25	125	20	500
D210-13	60 x 15	28	20	500
D210-14	50 x 9	12	20	500
D210-15	35 x 10	9	20	500

## D210 STERILE PETRI DISHES

Made of polystyrene

**Simport** Petri dishes are available in a variety of shapes and sizes for use in routine procedures and with automated equipment. Economical, optically clear dishes are precision-molded from biomedical grade polystyrene so cultures are clearly visible without distortion. Dishes are packaged in heavy-wall polyethylene sleeves.

### D210-7 Size: 100 mm x 20 mm

For unimpaired observation of specimen growth with raised straight ridge around top for stable stacking

### D210-7WL Size: 100 mm x 20 mm

This dish has three venting ribs into the underside of the lid to prevent condensation build-up

### D210-8 Size: 100 mm x 25 mm

Accommodates deeper fills for longer culture periods. Used for fungal cultures, plant propagation. This dish has three venting ribs into the underside of the lid to prevent condensation build-up.

### D210-8R Size: 100 mm x 25 mm

Similar to D210-8 but with non-vented lid having a raised straight ridge around top for stable stacking

### D210-13 Size: 60 mm x 15 mm

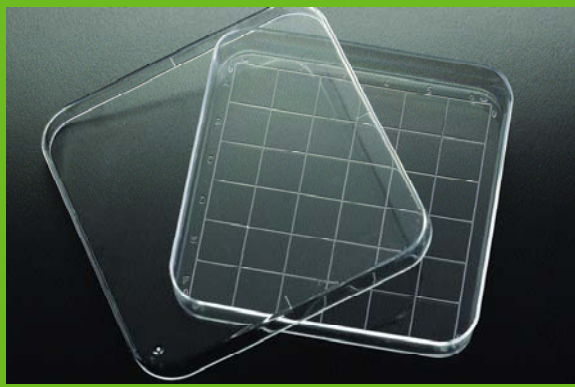
For use whenever a small quantity of culture is desirable. For unimpaired observation of specimen growth with raised straight ridge around top for stable stacking. This dish has three venting ribs into the underside of the lid to prevent condensation build-up.

### D210-14 Size: 50 mm x 9 mm

Box type dish, for classroom studies, water studies, culturing of mycobacteria, aerosol testing, membrane filter and immunodiffusion techniques. Tight lid prevents sample dehydration.

### D210-15 Size: 35 mm x 10 mm

Selected for small quantities of culture media. For unimpaired observation of specimen growth with raised straight ridge around top for stable stacking. This dish has three venting ribs into the underside of the lid to prevent condensation build-up.

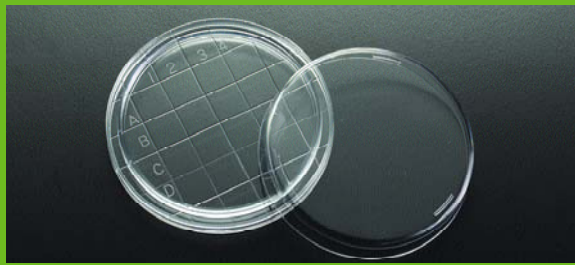


## D210-16 SQUARE PETRI DISH WITH GRID

Made of polystyrene

Free from optical distortion and sterile. These dishes are ideal for phage typing, susceptibility testing, plate counts, and probe assays. Each 13 mm grid is marked numerically in one direction and alphabetically in the other. This dish has four venting ribs into the underside of the lid to prevent condensation build-up.

Cat. #	Size (mm)	Vol. (ml)	Qty/Sleeve	Qty/Cs
D210-16	100 x 15	110	10	500



## D210-17 CONTACT PLATE

Made of polystyrene

Free from optical distortion and sterile. These dishes are designed to allow a raised convex surface of culture medium. The grid is 10 x 10 mm with numbered and lettered squares to facilitate counting and to locate colonies.

Cat. #	Size (mm)	Vol. (ml)	Qty/Sleeve	Qty/Cs
D210-17	65 x 15	20	20	500



## D210-18 ABSORBENT PAD PETRI DISHES

Made of polystyrene

These 50 x 9 mm sterile Petri dishes with absorbent pads are ideal for culturing microorganisms on either agar or broth based media. Designed to accommodate 47 mm diameter membrane filters. These dishes are stackable and have squared off edges on both the top and bottom which provide convenient grips for one handed opening. The snug fitting top ensures that neither the absorbent pad nor the agar media will dry out during incubation. A frosted area on top of lid permits labeling. Made of non toxic clear polystyrene.

Cat. #	Size (mm)	Style	Qty/Sleeve	Qty/Cs
D210-18A	50 x 9	Without Pads	20	500
D210-18B	50 x 9	With Pads	20	500